

THE DONKEY SANCTUARY'S THEORY OF CHANGE FOR INTERNATIONAL WORK

What is a Theory of Change?

Our Theory of Change is both a tool and a methodology which we have started to incorporate into our ways of working.

Theory of Change is widely used in the international development and humanitarian sector for strategic planning, project design and planning for evaluations.

Our Theory of Change helps us articulate *what* we are trying to achieve, *why* we carry out the activities that we do, and *how* change happens in the short, medium, and long term to contribute to achieving the intended impact.

Our Theory of Change is a living framework that evolves and improves as we learn from implementation, research, and evaluation.

Why do we use it?

The root causes that affect donkey and mule welfare are complex and interdependent, and one single approach or intervention will not be able to address them. Even if an

intervention has been successful in a specific country, we cannot assume we will be able to simply duplicate it in a different country.

Developing a Theory of Change for our international work has helped us to systematically think through the many layers of our work, how they interrelate, and what is needed at different levels to achieve sustainable and positive change for donkeys and mules internationally.

This has provided a way to summarise the complexity of our work and bring clarity to what we do, how, and why we do it.

A Theory of Change is a flexible methodology with a wide range of uses to underpin planning and evaluation. Having a Theory of Change is another step forward towards developing better interventions, monitoring our progress, and building an evidence-based portfolio of work.

Our Theory of Change for International Work

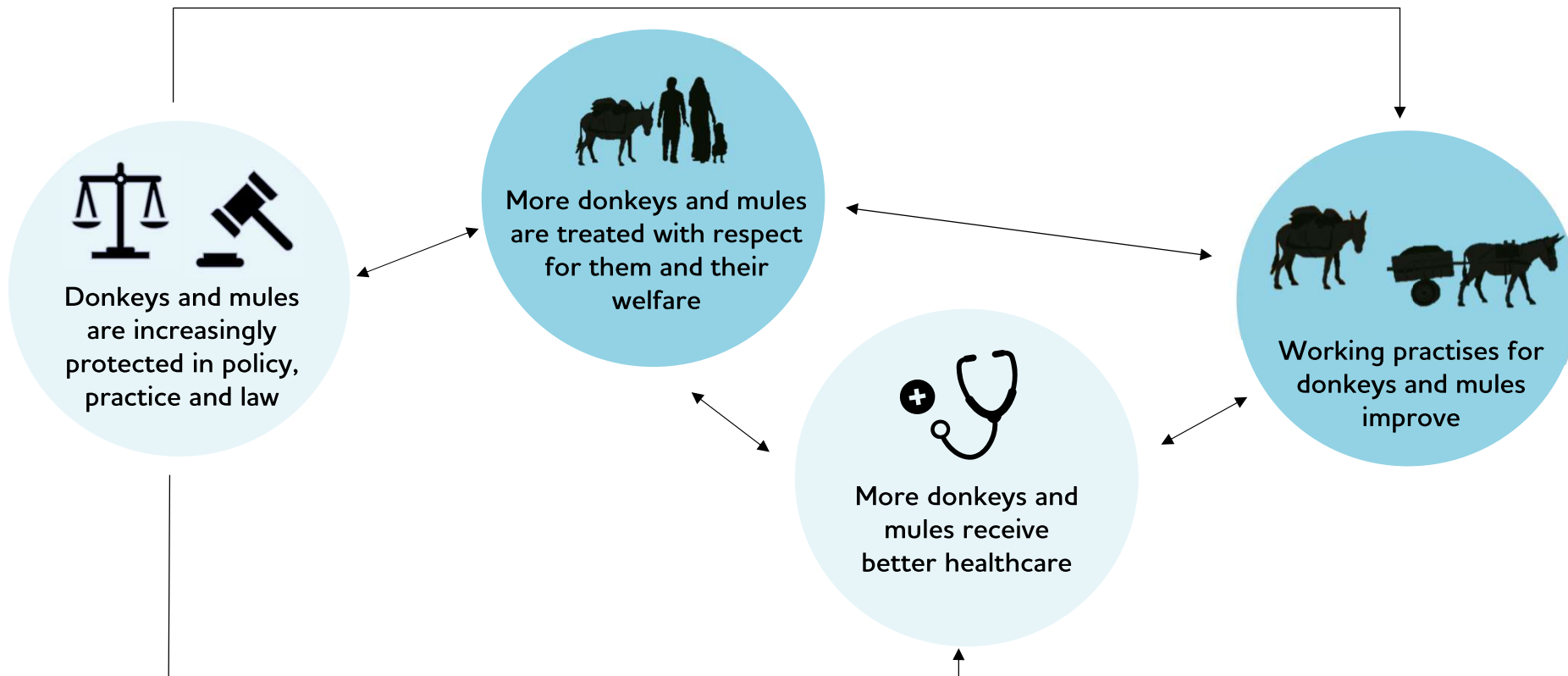
In our Theory of Change we recognise the complex interaction between donkey and mule welfare, the communities where they live, and the wider systems within which they co-exist.

Our Theory of Change has four donkey- and mule-specific expected outcomes, when taken together they contribute to achieving our impact.

OUR IMPACT



Donkeys and mules have better lives because they are protected, valued and cared for wherever they are.



OUR APPROACH



The Donkey Sanctuary develops and disseminates research into donkey and mule welfare and the contexts in which they live



The Donkey Sanctuary aims to build an evidenced-based approach to all our activities, operations and partnerships



The Donkey Sanctuary collaborates with, and in some cases provides funds for, partners which influence and operate at different levels of society



Our impact

Donkeys and mules have better lives because they are protected, valued and cared for wherever they are.

The outcomes we will create

Decision-makers at all levels increase action to promote the welfare of donkeys and mules and to protect them.

Donkeys and mules receive better healthcare.

Working practises for donkeys and mules improve.

More donkeys and mules are treated with respect for them and their welfare.

The Donkey Sanctuary is able to achieve its mission and on a bigger scale; and the people and communities who depend on donkeys and mules have more resilience.

There are more people at all levels who understand the vital roles donkeys and mules play in societies, the compromises in their welfare, and the solutions which can be implemented. As a result, they engage with the issues and act to protect them.

There are more vets and para-vets with increased skills, so that the quality and accessibility of donkey and mule healthcare improves.

Technical service providers have better information and skills to preserve donkey welfare and to provide advice within their communities.

People, owners and communities know more about the needs of donkeys and mules, so that behaviours change and care improves.

Partners have more capability to take effective action; and they collaborate with The Donkey Sanctuary as a trusted partner.

What we will deliver and how we will work

Campaigning and advocating to stakeholders including influencers, decision-makers, commercial stakeholders and the public.

Resources and virtual learning for vets, para vets, dentists and farriers, and support for knowledge development.

Support and information for technical service providers - including makers of harnesses and implements.

Support and information for the people, owners, businesses and communities where donkeys and mules live; and education projects at different levels of society.

Support and information for partners to understand the relationships between donkey and mule welfare and their own mission.

To achieve its strategic goals The Donkey Sanctuary collaborates with, and in some cases provides funds for, partners which influence and operate at different levels of society. Partners include NGOs (especially equine welfare, animal welfare, human development, humanitarian, and conservation), Inter-Governmental Organisations, universities and other education institutions, and government agencies at all levels.

The Donkey Sanctuary develops and disseminates research into donkey and mule welfare and the contexts in which they live.

This research provides an evidence-based approach to all its activities, operations and partnerships and is informed by stakeholders at all levels - from donkey owners and communities, to local partners and actors, and government and global organisations.

